

U.S. NAVY

MARINE CORPS BASE
CAMP LEJEUNE,
NORTH CAROLINA

28 JAN 10 FEB 68

RMCB 26

RESERVE MOBILE CONSTRUCTION BATTALION-26 CREED

OUR MISSION, AS RESERVE MOBILE CONSTRUCTION BATTALION TWENTY-SIX, IS TO BE ABLE TO FIELD A FULLY MANNED, FULLY TRAINED AND ORGANIZED BATTALION CAPABLE OF PERFORMING CONSTRUCTION TASKS THAT MAY BE ASSIGNED. WE MUST ALSO BE ABLE TO DEFEND OUR OPERATIONS AGAINST GUERRILLA ACTION.

EACH OF US, AS AMERICANS, AS MEMBERS OF THE ARMED SERVICES AND AS MEMBERS OF RMCB-26, MUST STRIVE CONSTANTLY, DOING ALL IN OUR POWER TO ASSURE THAT WE HAVE SUFFICIENT MEN WITH PROPER RATING, COMPETENT IN RATE, PHYSICALLY, MENTALLY AND MORALLY FIT. WE MUST CONTINUE TO IMPROVE OURSELVES AND TEACH OUR FELLOW MEMBERS IN THE TECHNICAL AND MILITARY SKILLS THAT WILL ENHANCE OUR CAPABILITY IN THE EVENT OF MOBILIZATION.

OUR COUNTRY, OUR FAMILIES, AND FELLOW AMERICANS ARE DEPENDING ON US. EACH OF US IS OBLIGATED UNDER OUR OATH, BEFORE GOD AND COUNTRY TO DO OUR BEST, REGARDLESS OF DIFFICULTY, PERSONAL HARDSHIP OR FAILURES OF OTHERS.

EACH OF US KNOW OUR OBLIGATIONS. EACH OF US KNOW THAT EXCELLENCE IS OUR STANDARD, WE ARE PROUD, WE ARE "SEABEES" WE ARE GOOD AMERICANS.

UNITED STATES MARINE CORPS BASE
CAMP LEJEUNE, N.C.

MILITARY TRAINING OF RMCB-26 AT CAMP LE JEUNE INCLUDED INSTRUCTION AND PRACTICE IN INDIVIDUAL AND CREW SERVED WEAPONS, TECHNIQUES OF FIRE, MAPPING, CAMOUFLAGE, TACTICS, COUNTER GUERILLA WARFARE, AND LEADERSHIP. COMMANDING GENERAL, MARINE CORPS BASE, MAJGEN J. O. BUTCHER ASSIGNED HEADQUARTERS AND SERVICE BATTALION, COMMANDED BY COL W. W. CURTIS TO ACT AS HOST UNIT FOR RMCB-26 WHILE DEPLOYED AT CAMP LE JEUNE, N.C. THE "H" AND "S" BATTALION TRAINING UNIT COORDINATED AND PROVIDED TRAINING SUPPORT FOR RMCB-26



MILITARY TRAINING CAMP LEJEUNE, N.C. 1968.



MAJ GEN J.O. BUTCHER
COMMANDING GENERAL, MARINE CORPS BASE



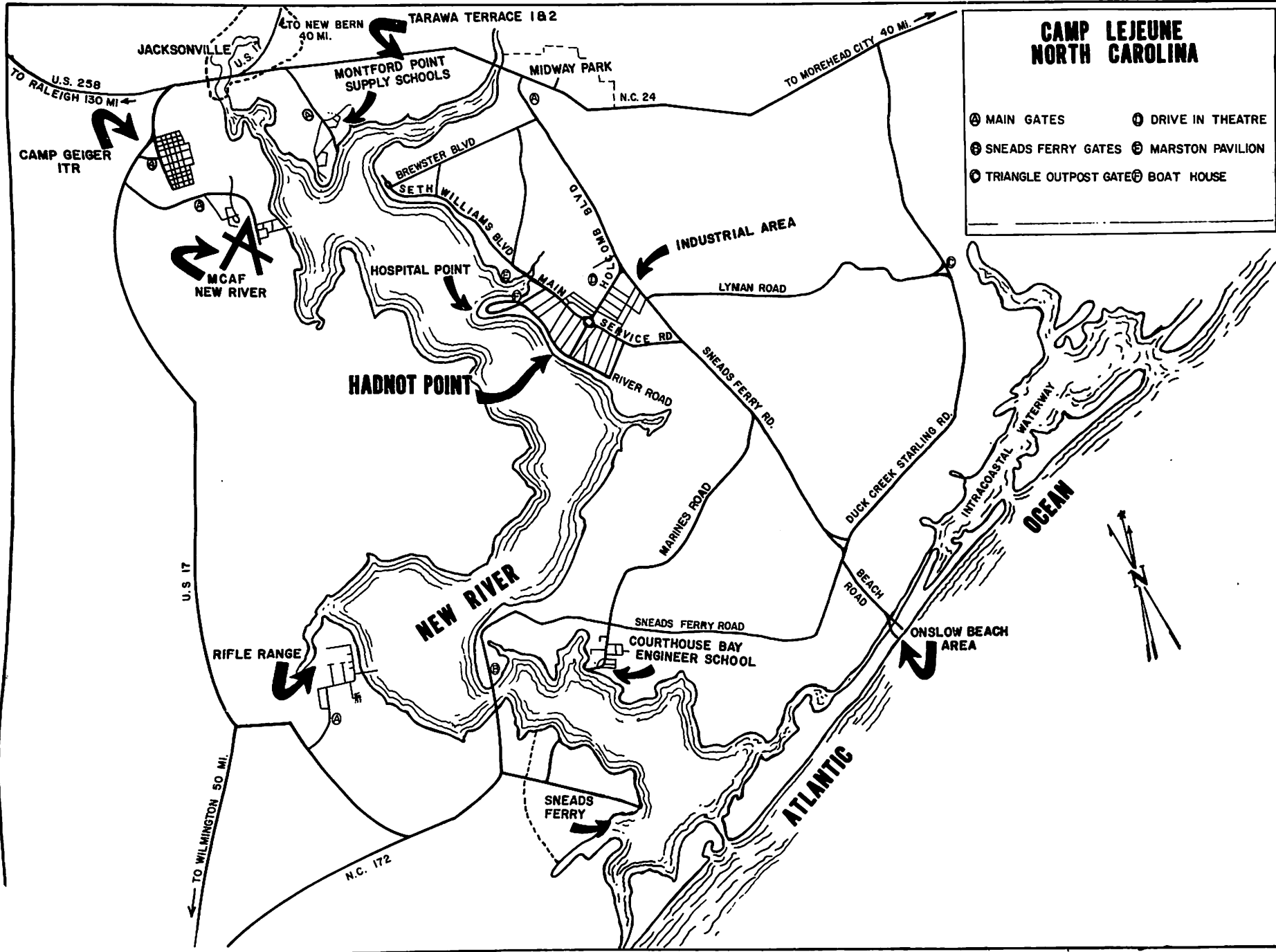
COL CURTIS

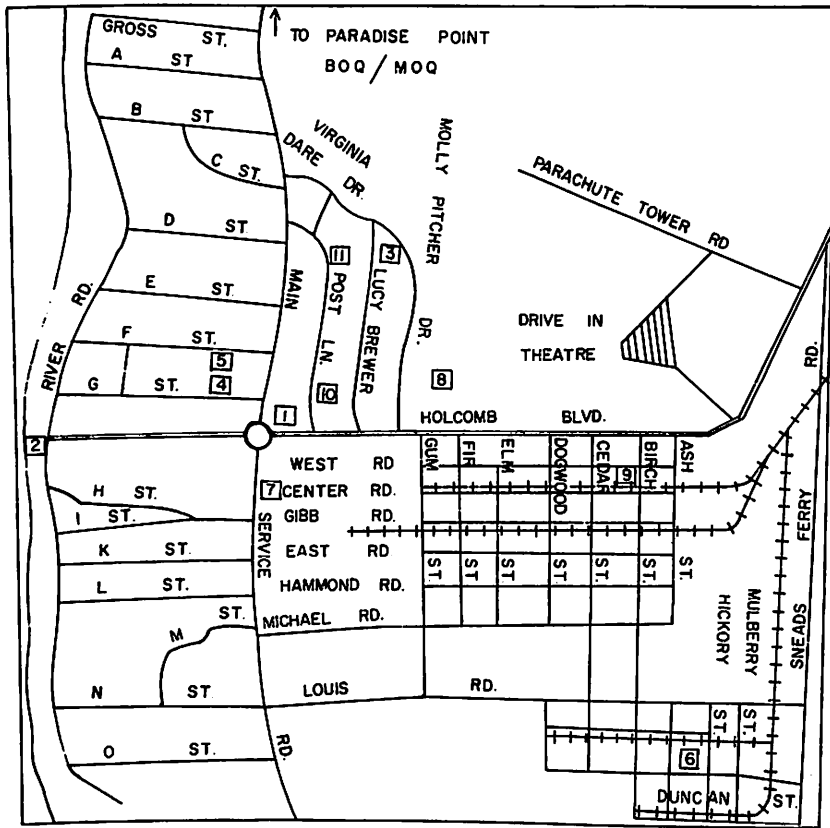


TRAINING UNIT, HEADQUARTERS & SERVICE BN

CAMP LEJEUNE NORTH CAROLINA

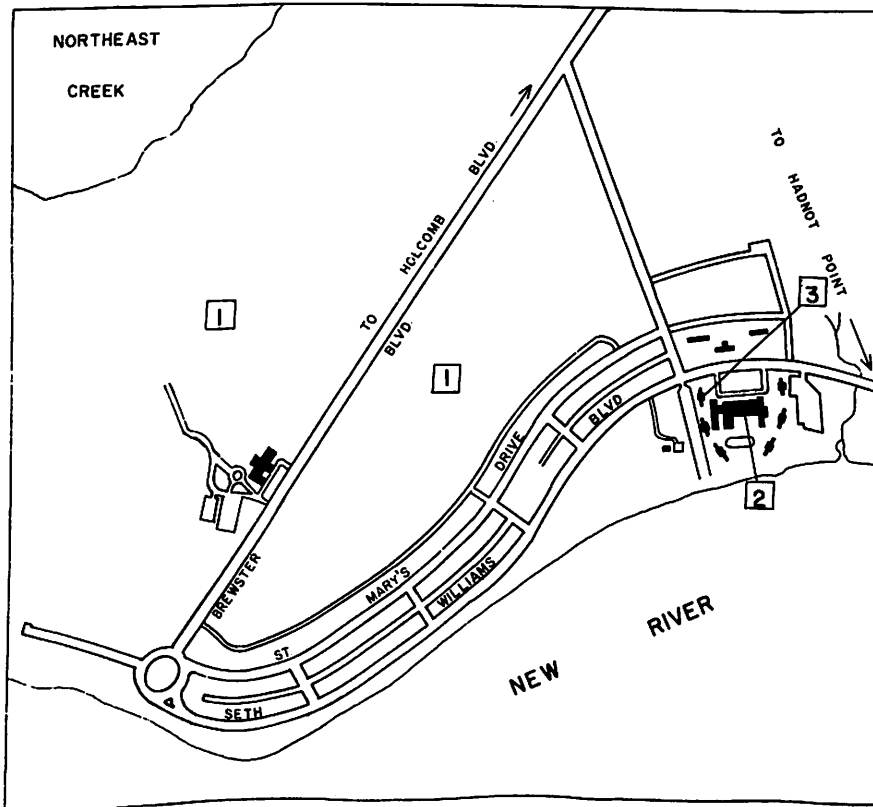
- Ⓐ MAIN GATES Ⓛ DRIVE IN THEATRE
- Ⓜ SNEADS FERRY GATES Ⓢ MARSTON PAVILION
- Ⓝ TRIANGLE OUTPOST GATE Ⓟ BOAT HOUSE





HADNOT POINT

- 1 Bldg. 1, Hq. MCB
- 2 Bldg. 2, Hq. 2dMARDIV
- 3 Bldg. 59, Hq. FT FMFLANT
- 4 Bus Depot
- 5 Railway Express
- 6 Household Effects
- 7 Hostess House
- 8 Main Exchange
- 9 Commissary
- 10 Dispensary
- 11 Provost Marshal



PARADISE POINT

- 1 Golf Course
- 2 COM (OPEN)
- 3 BOQ Guest House

NAVAL FACILITIES ENGINEERING COMMAND



**RADM A.C. HUSBAND, CEC, USN
COM NAV FAC**



**CDR R.A. LITKE, CEC, USN
MANAGER RESERVE PROGRAM
NAV FAC**

REAR ADMIRAL A.C. HUSBAND, CEC, USN, IS THE CHIEF OF CIVIL ENGINEERS AND AS SUCH IS THE "SENIOR SEABEE" IN OUR CHAIN OF COMMAND. RADM HUSBAND SERVES AS COMMANDER, NAVAL FACILITIES ENGINEERING COMMAND (FORMERLY THE BUREAU OF YARDS AND DOCKS) NOW IN ITS 126th YEAR OF SERVICE TO THE NAVY.

CDR. R. A. LITKE, CEC, USN, MANAGES THE SEABEE RESERVE PROGRAM FOR ADMIRAL HUSBAND. CDR LITKE IS RESPONSIBLE FOR DEVELOPMENT OF CONSTRUCTION BATTALION PROGRAMS TO MEET NATIONAL DEFENSE REQUIREMENTS AND FOR CO-ORDINATION OF ALL NATION-WIDE ACTIVITIES OF SEABEE RESERVISTS.

NINTH NAVAL DISTRICT

THE COMMANDANT IS THE MILITARY COMMANDER WITH DIRECT AUTHORITY OVER RMCB-26

THE RESERVE CB PROGRAM OFFICER, CDR. J. L. PIERCE, IS THE COMMANDANTS REPRESENTATIVE THAT CLOSELY COORDINATES CONSTRUCTION BATTALIONS.



**RADM H.A. RENKEN
COMMANDANT**



**CDR J.L. PIERCE
CB PROGRAM OFFICER**



**CDR E.R. ENGLERT
COMMANDING OFFICER RMCB-26**



CAPTAIN L.A. WOODMAN
TUSCALOOSA, ALABAMA

WHILE ON ACTIVE DUTY FOR TRAINING AND WITH THE EVENT OF MOBILIZATION, RMCB-26 IS PART OF RESERVE NAVAL CONSTRUCTION REGIMENT THREE. RNCR 3 IS COMMANDED BY COMMODORE WOODMAN WITH HEADQUARTERS AT TUSCALOOSA, ALABAMA. RNCR3 IS COMPOSED OF RMCB-14 WITH HEADQUARTERS AT TAMPA, FLORIDA, COMMANDED BY CDR. P.R. BROWN AND RMCB-24 WITH HEADQUARTERS AT KNOXVILLE, TENNESSEE, COMMANDED BY CDR H.C. RUSSELL, AND RMCB-26 CDR G.R. BROCKWAY IS CHIEF STAFF OFFICER, LCDR E. BLOOM IS OPERATIONS OFFICER AND LCDR T.B. MADDOX IS ADMINISTRATIVE OFFICER ON COMMODORE WOODMANS STAFF.

HISTORY

NAVAL CONSTRUCTION BATTALION-26

NAVAL CONSTRUCTION BATTALION-26 WAS FORMED AT CAMP ALLEN, NORFOLK, VIRGINIA ON 8 AUGUST 1942. AFTER ADVANCED TRAINING AT CAMP BRADFORD, LITTLE CREEK, VIRGINIA. NCB-26 WAS COMMISSIONED IN SEPTEMBER 1942. IN DECEMBER 1942 NCB-26 DEPLOYED TO GUADACANAL WHERE IT'S MEMBERS HELPED CONSTRUCT HENDERSON FIELD UNDER ALMOST CONTINUOUS COMBAT CONDITIONS. NCB-26 WAS FURTHER DEPLOYED IN THE SOUTHWEST PACIFIC IN SUPPORT OF VARIOUS ADVANCE BASE GROUPS FOR THE DURATION OF THE WAR. IN 1946 NAVAL CONSTRUCTION BATTALION WAS DEACTIVATED.

RESERVE MOBILE CONSTRUCTION BATTALION-26

RESERVE MOBILE CONSTRUCTION BATTALION-26 WAS ORGANIZED IN 1962 AS AN ELEMENT OF THE SELECTED NAVAL RESERVE WITH CDR. M.C. WAKEFIELD, COMMANDING, WITH HEADQUARTERS IN MILWAUKEE, WISCONSIN. RMCB-26 IS PRESENTLY COMPOSED OF THE FOLLOWING RESERVE CONSTRUCTION BATTALION DIVISIONS FROM THE NINTH NAVAL DISTRICT.

- 9-3 PEORIA, ILLINOIS
- 9-4 SPRINGFIELD, ILLINOIS
- 9-5 INDIANAPOLIS, INDIANA
- 9-6 DAVENPORT, IOWA
- 9-20 ST. LOUIS MISSOURI
- 9-35 ROCKFORD, ILLINOIS
- 9-31 CAPE GIRARDEAU, MISSOURI
- 9-37 FORT WAYNE, INDIANA
- 9-40 EVANSVILLE, INDIANA

RMCB-26 IS ONE OF THREE RESERVE MOBILE CONSTRUCTION BATTALIONS THAT COMPRISE NAVAL RESERVE CONSTRUCTION REGIMENT THREE WITH CAPT. L.A. WOODMAN, COMMANDING.

SINCE ITS ORGANIZATION IN 1962, RMCB-26 HAS BEEN DEPLOYED FOR BATTALION ACTIVE DUTY FOR TRAINING AT THE FOLLOWING PLACES:

1963 - CONSTRUCTION BATTALION CENTER, DAVISVILLE, R.I.

1964 - MARINE CORP BASE, CAMP LE JEUNE, N.C.

1965 - CONSTRUCTION BATTALION CENTER, DAVISVILLE, R.I.

1966 - PEACEFUL VALLEY BOY SCOUT RANCH, ELBERT, COLO.

1967 - ADPHIBIOUS TRAINING CENTER, LITTLE CREEK, VA.

IN JULY 1966 CDR. E. R. ENGLERT OF LOUISVILLE, KY., ASSUMED COMMAND OF RMCB-26. AT THAT TIME BATTALION HEADQUARTERS WAS MOVED TO INDIANAPOLIS, INDIANA. THE FORMER COMMANDING OFFICER, CAPT M.C. WAKEFIELD IS PRESENTLY SERVING AS COMMANDER, NAVAL RESERVE CONSTRUCTION REGIMENT TWO.



CAPT M.C. WAKEFIELD
FORMER C.O. RMCB-26 (1962- 1966)

EVALUATORS

CAPT. F. H. MC CARRAN JR., CEC, USNR-R
FIRST NAVAL DISTRICT, BOSTON, MASS.
SENIOR EVALUATOR

CDR. J. G. LOHMAN, CEC, USNR-R
FIRST NAVAL DISTRICT, BOSTON, MASS.

LCDR. R. W. BRAUN, CEC, USNR-R
NINTH NAVAL DISTRICT, CHICAGO, ILL.

CAPTAIN F.H. MC CARRAN JR., AND HIS TEAM WERE ASSIGNED TO EVALUATE RMCB-26 AS A BATTALION DURING IT'S TWO WEEKS ACDUTRA AT CAMP LE JEUNE, NORTH CAROLINA. THE CONSTRUCTIVE EVALUATION BY THIS TEAM GUIDES BOTH THE BATTALION AND HIGHER ECHELONS IN ACTIONS NECESSARY TO MAINTAIN A HIGH STATE OF READINESS FOR MOBILIZATION.



RESERVE MOBILE CONSTRUCTION BATTALION - 26



CDR E.R. ENGLERT, CEC, USNR-R



LCDR W.A. HERRMANN, CEO, USNR-R

MILITARY TRAINING, CAMP LEJEUNE N.C. 1968



**CDR J.R. CORBETT |
MEDICAL OFFICER**



**LCDR R.P. BELL
CHAPLAIN**



ADMINISTRATIVE PERSONNEL

**CWO E. E. KAERCHER, YN2 KONERSMAN, YN2 SPERLING, YN1 SCHAFFERS
YN1 BOCK, YN3 RIFE, YN1 TOWERS, YNC OSLAND, YN3 CRAIG**



**PUBLIC AFFAIRS STAFF
SHOEMAKER, E01 BEISMAN, CS3
LCDR J.B. CASSERLY LT H. WOOD**



PERSONNEL INSPECTION

"H" COMPANY

"H" COMPANY IS THE ADMINISTRATIVE UNIT FOR RMCB-26. THE PERSONNEL ASSIGNED TO "H" COMPANY PROVIDE THE ADMINISTRATIVE, LOGISTIC, AND SERVICE SUPPORT FOR THE BATTALION. THIS INCLUDES: YEOMEN (YN) AND PERSONNEIMEN (PN) IN THE BATTALION OFFICES, RADIOMEN (RM) FOR COMMUNICATIONS, HOSPITALMEN (HM) AND DENTAL TECHNICION (DT). SUPPLY DEPARTMENT PERSONNEL ASSIGNED TO "H" COMPANY INCLUDE STOREKEEPERS (SK), DISBURSING CLERKS (DK), AND COMMISSARYMEN (CS) WHO OPERATE THE GENERAL SUPPLY, SPARE PARTS AND REPAIR PARTS ISSUE, BUILDING MATERIALS SUPPLY, GENERAL MESS FOR THE BATTALION, AND PAYMENT OF WAGES FOR THE BATTALION PERSONNEL.

ENGINEERING, PLANNING AND ESTIMATING FUNCTIONS: INCLUDING, SURVEYING INSPECTION AND TESTING, FIELD ENGINEERING, DRAFTING, AND PROGRESS CONTROL ARE PERFORMED BY THE ENGINEERING AIDS (EA) ASSIGNED TO "H" COMPANY.

OTHER FUNCTIONS OF "H" COMPANY IN SUPPORT OF THE BATTALION FUNCTIONS INCLUDE, TRAINING, PASSIVE DEFENSE, MASTER-AT-ARMS, CAMP OPERATION, ORDNANCE, INFORMATION AND EDUCATION SERVICES, AND SPECIAL SERVICES. "H" COMPANY PERFORMS BASICALLY THESE SAME FUNCTIONS UNDER THE CONSTRUCTION-COMBAT CONCEPT OF ORGANIZATION FOR RMCB-26.

RMCB-26

BATTALION COLOR GUARD



H - COMPANY



"A" COMPANY

"A" COMPANY MAINTAINS AND OPERATES AUTOMOTIVE AND CONSTRUCTION EQUIPMENT ASSIGNED TO RMCB-26. THIS INCLUDES SUCH EQUIPMENT AS MOTOR GRADERS, POWER SHOVELS AND CRANES, CRAWLER TYPE EQUIPMENT, HEAVY EARTH MOVING EQUIPMENT, CONCRETE BATCH PLANTS, ASPHALT PLANTS, QUARRY PLANT EQUIPMENT, AND PAVING EQUIPMENT. EQUIPMENT OPERATORS (EO) ARE ASSIGNED TO OPERATE THIS EQUIPMENT. "A" COMPANY PERSONNEL CONDUCT SUCH OPERATIONS AS, EARTH-MOVING, GRADING, EXCAVATION, PAVING, HAULING, PILE DRIVING, BLASTING, WELL DRILLING, HEAVY LIFTING, AND DEMOLITION. IN ADDITION, "A" COMPANY OPERATES A MACHINE SHOP, AND PERFORMS MAJOR AND MINOR MAINTENANCE AND SERVICING OF THE AUTOMOTIVE AND CONSTRUCTION EQUIPMENT ASSIGNED TO RMCB-26. PERSONNEL ASSIGNED TO THESE FUNCTIONS ARE CONSTRUCTION MECHANICS (CM).

"A" COMPANY OPERATES THE MOTOR POOL WHICH INCLUDES ALL OF THE AUTOMOTIVE TYPE VEHICLES, INCLUDING, JEEPS, PERSONNEL CARRIERS, TRUCKS, AND AUTOMOBILES ASSIGNED TO RMCB-26.

FOR COMBAT OPERATIONS "A" COMPANY FUNCTIONS AS A RIFLE COMPANY, WITH ONE PLATOON ASSIGNED AS AN AUTOMATIC WEAPONS PLATOON

RMCB-26

A - COMPANY



1ST PLATOON



2D PLATOON

"B" COMPANY

"B" COMPANY IS DESIGNATED A SPECIAL CONSTRUCTION COMPANY. AS SUCH, THE COMPANY PERFORMS SUCH JOBS AS, ERECTION OF METAL BUILDINGS, STRUCTURAL STEEL FABRICATION AND ERECTION, REINFORCING STEEL WORK, SHEET METAL FABRICATION AND INSTALLATION, ELECTRICAL WORK, PLUMBING AND HEATING, AIR CONDITIONING AND REFRIGERATION, WATER SUPPLY AND SEWAGE DISPOSAL. THIS WORK IS USUALLY IN SUPPORT OF THE WORK OF THE GENERAL CONSTRUCTION WORK. "B" COMPANY MAY BE ASSIGNED SUCH SEPARATE JOBS AS INSTALLATION OF POWERLINES, PIPE-LINES, TANK FARMS, PUMPING STATIONS, STEEL TOWERS AND OTHER SPECIALIZED JOBS. "B" COMPANY ALSO OPERATES A PAINT SHOP, CARPENTER SHOP, AND CONSTRUCTION TOOL ROOM. IT MAY ALSO BE REQUIRED TO OPERATE A BLOCK PLANT, SAWMILL, AND A PRECAST CONCRETE YARD, AS THE SITUATION MAY REQUIRE. THE RATINGS THAT ARE ASSIGNED TO "B" COMPANY INCLUDE, STEELWORKER (SW), CONSTRUCTION ELECTRICIAN (CE), UTILITIESMAN (UT), BUILDER (BU), MACHINISTS MATE (MM). LIKE "A" COMPANY, "B" COMPANY FUNCTIONS AS A RIFLE COMPANY WITH AN AUTOMATIC WEAPONS PLATOON IN SUPPORT OF COMBAT OPERATIONS OF THE BATTALION.

RMCB-26

B - COMPANY



1ST PLATOON



2D PLATOON

"C" AND "D" COMPANIES

"C" AND "D" COMPANIES FUNCTION AS GENERAL CONTRACTORS AND ARE USUALLY ASSIGNED PRIME RESPONSIBILITY FOR GENERAL CONSTRUCTION PROJECTS. PERSONNEL OF THESE COMPANIES ARE ALL-ROUND CONSTRUCTION CRAFTSMEN, VERSATILE IN SUPERVISING OR PERFORMING ROUGH AND FINISHED CARPENTRY, CONCRETE FORMING AND CONSTRUCTION, DOCK BUILDING, BRICK AND BLOCK MASONRY, PAINTING, AND OTHER RELATED CONSTRUCTION WORK. THE BUILDER RATING (BU) IS ASSIGNED TO THESE COMPANIES. THE PERSONNEL IN THE BUILDER RATING MAY BE A SPECIALIST IN ONE OF THE ABOVE AREAS, HOWEVER, MOST ARE FUNCTIONAL IN ALL OF THE GENERAL CONSTRUCTION JOBS. "C" AND "D" COMPANIES BOTH FUNCTION AS RIFLE COMPANIES AND ALSO PROVIDE AUTOMATIC WEAPONS AND CREW SERVED WEAPONS SUPPORT.

RMCB-26

C - COMPANY



D - COMPANY



U. S. NAVAL RESERVE MOBILE CONSTRUCTION BATTALION TWENTY-SIX

U. S. MARINE CORPS BASE

ELDG. 426

CAMP LE JEUNE, N.C.

10 FEBRUARY 1968

COMPANY COMMANDER: LT. A.E. MORRIS

ASST COMPANY COMMANDER: LT. R.R. DAGUE

"A" COMPANY - PLATOON 1

<u>NAME</u>	<u>RANK/RATE</u>
DAGUE, R.R.	LT
MORRIS, A.E.	LT
AKERS, G.W. JR.	EOC
ALDERSON, R.L.	EO1
BEARD, M.L.	EO1
BEST, B.J.	EON2
BROSHEARS, F.(n)	EO1
BUSEY, L.C.	EO1
BUTCHER, B.B.	EOH3
CHRISTOFF, G.E.	EO1
COCHRAN, R.B.	EOH2
COLE, J.H.	EON2
COMPASS, E.L.	EO1
CRIST, S.A.	EOC
CROWE, C.F.	CN
DISON, M.M.	EO1
DIVERT, C.W.	EO1
DOLENZ, T.J.	EOH2
ELLIS, W.B.	EON2
GALYON, J.A.	EOCS
GANZER, M.V.	EO1
McLEMORE, R.L.	EO1
MEREDITH, R.G.	EOH2
MULLEN, D.O.	EON2
POINSETT, C.D.	EON2
SANDERS, F.E.	EOC
SCHAEFER, E.A.	EOC
SCHNEIDER, R.L.	EOH2
SMITH, B.	EOH2
STOCK, P.J.	EOC
SUMMERS, R.E.	SF1
TATE, T.W.	EOH2
TITTLE, R.D.	EOCS
TREFT, R.G.	EO1
WADE, R.D.	EON3
WOUTERS, R.J.	EOH2

U.S. NAVAL RESERVE MOBILE CONSTRUCTION BATTALION TWENTY-SIX
MARINE CORPS BASE

BLDG. 426

CAMP LE JEUNE, N.C.

10 FEBRUARY 1968

COMPANY COMMANDER: BLANCHAR, J.H. LT.

ASST. CO. COMMANDER: LT. R.H. STROER

"B" COMPANY - PLATOON 1

<u>NAME</u>	<u>RANK/RATE</u>
BLANCHAR, J.H.	LT
STROER, R.H.	LT
ALLISTON, W.A., JR.	CECS
AULD, J.L.	CEP3
BOWMAN, P.D.	CEC
BUESKING, R.O.	CEL2
DANZ, D. A.	EM3
DAVIS, C.E.	CEW2
GASKILL, R.J. JR.	CEC
HAMAN, C.T.	CEC
HYLAND, R.A.	CEW2
MADDEN, J.D.	CEP2
MILLER, H.R.	CET2
MOSCHNER, G.R.	EM2
NEISWENTER, G.H.	CEL1
OGILVIE, W.D.	CET2
REYNOLDS, D.R.	SFP3
SCHOOK, R.W.	CEW3
SHRUM, H.L.	CEP2
SMITH, K.H.	CEC
SMITH, O.A.	CEC
STEVENS, W.H.	CEC
SWINDLER, F.J.	CEC
WILLIAMS, R.T.	CEC
WOLFE, C.W.	CEC
VOLK, R.G.	CEW3

U.S. NAVAL RESERVE MOBILE CONSTRUCTION BATTALION TWENTY-SIX

U. S. MARINE CORPS BASE

BLDG. 426

CAMP LE JEUNE, N.C.

10 FEBRUARY 1968

COMPANY COMMANDER: LT.J.H. BLANCHER

ASST. CO. COMMANDER: LT. R. H. STROER

"B" COMPANY - PLATOON 2

<u>NAME</u>	<u>RANK/RATE</u>
BLANCHER, J.H.	LT
STROER, R.H.	LT
ALBRECHT, L.C.	SWF2
BARNETTE, E.F.	CMI
BECK, O.M.	SW1
BELL, C.E.	UT1
EENN, C.	SWE2
BLACKER, G.F.	SWE2
BUNSE, W.H.	UTB2
BURKS, F.D.	SWF2
BURLESON, P.C.	SWC
BUTLER, W.H.	SWE2
CARVER, F.	SFM3
CHAPIN, J.W. JR.	SWC
COVEY, R.G.	SW1
DELARUE, H.A.	SWF2
DE PAUW, P.	SW1
EGMON, G.C.	UTB2
FLATT, J.L.	SFM2
FOX, R.J.	UTC
HERBON, R.E.	UTP2
HINZE, E.L.	SWE2
HOTOP, W.J.	UTP2
HRZHORYSAK, J.R.	SW1
MORMINO, R.A.	SW1
OLIVER, J.L.	UT1
OSWALT, M.D.	SWC
PINNON, K.W.	SWF3
POKORSKI, R.J.	UTC
ROGERS, E.E.	SWC
RUSHING, R.W.	SN
RUSSELL, E.R.	SW1
SMITH, H.E.	UTCMI
SMITH, F.D.	MR3
SNODGRASS, T.P.	SWE2
SPEICHER, F.P.	UTC
STECKLER, L.J.	UTP3
STEENEERGEN, C.C.	SW1
VANDERDRIFT, T.J.	SWF2
WALLIS, J.E.	UTW2

NAVAL RESERVE MOBILE CONSTRUCTION BATTALION TWENTY-SIX
MARINE CORPS BASE
CAMP LEJEUNE, N.C.

10 FEBRUARY 1968

BLDG. 426

COMPANY COMMANDER: LT. A. FINCH
ASST COMPANY COMMANDER: LT. D. J. NOBEL

<u>NAME</u>	<u>"D" COMPANY</u> <u>RANK/RATE</u>
FINCH, A.	LT
NOBEL, D. J.	LT
BRODT, T. G.	BUC
BROOKS, R. L.	CN(BUL)
FULLER, A. E.	BUL2
HASELTON, F.	BUL2
HELKE, A. L.	CN(CMH)
HEMMELE, L. D.	BUL1
HINZE, J. M.	BUL2
KUNZ, W. R.	BUC
LEMON, W. E.	CN(EON)
LEWIS, K. E.	BUC
MAEVERS, J. L.	BUL1
MASON, D. S.	BUL2
MERRY, W. D.	SN(PC)
MOUSER, S. W.	BUL3
MOWERY, R. W.	BUL2
RAMIGE, M. D.	BUC
SPURGEON, M. D.	BUC

COMPANY COMMANDER: LT. K. L. ERNST
ASS'T COMPANY COMMANDER: LT. C. F. HEGNER

	<u>"C" COMPANY</u>
ERNST, K. L.	LT
HEGNER, C. F.	LT
BLUMER, E. N.	(BUL)BT2
BORRSON, G. F.	BUL2
BOWLYOU, R. E.	(EM)SN
BROSHEARS, B. G.	BUC
CANAAN, D. F.	SWE3
CROWELL, R. H.	BUL1
EBERLE, J. J.	SA
PALMER, D. E.	CN
PRAHL, H. G.	BUC
RICHMOND, D. K.	BULCN
RIGGS, D.D.	BUL1
RUTLEDGE, J. C.	BUC
SCHINDIER, A. E.	BUC
SCHOOLFIELD, W. F.	BUC
TIPPIT, L. (N)	BUL2
USERY, C. E.	BUL1
WINCH, R. L.	BUL2

MILITARY TRAINING, CAMP LEJEUNE, N.C. 1968
WEAPONS INDOCTRINATION & FIRING
RAPID FIRING WITH M-14 RIFLE



MILITARY TRAINING, CAMP LEJEUNE, N.C. 1968
WEAPONS INDOCTRINATION AND FIRING
M-16 AUTOMATIC RIFLE



MILITARY TRAINING, CAMP LEJEUNE, N.C. 1968
WEAPONS INDOCTRINATION & FIRING
106 MM RECOILLESS RIFLE



LOOK-OUT BEHIND!!



MILITARY TRAINING, CAMP LEJEUNE N.C. 1968
WEAPONS INDOCTRINATION & FIRING
3.5" ROCKET LAUNCHER



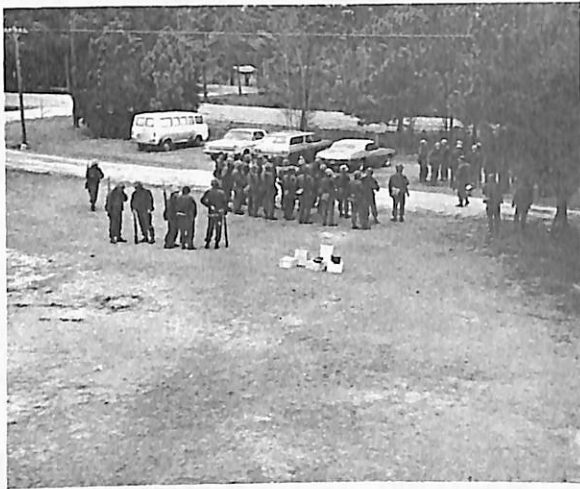
MILITARY TRAINING, CAMP LEJEUNE N.C. 1968
WEAPONS INDOCTRINATION & FIRING
81 MM MORTAR



MILITARY TRAINING CAMP LEJEUNE, N.C. 1968



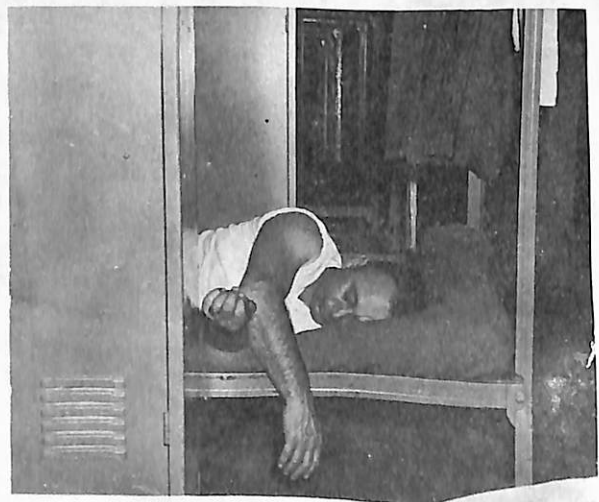
MILITARY TRAINING, CAMP LEJEUNE, N.C. 1968



TAKE A BREAK



LATER



MUCH LATER



DINING HALL UNDER CONSTRUCTION



ROADWAY CONSTRUCTION